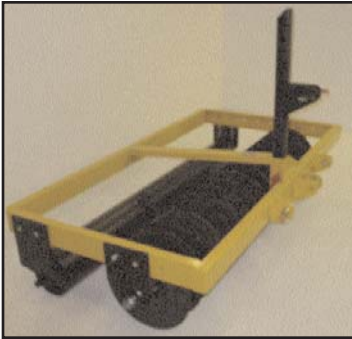


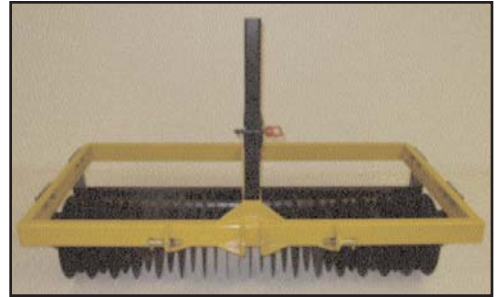
NT-Series TOOLBAR & SwitchBack

JOB Site Attachment
for Tractor/ATV/Utility Vehicle

by NORTEC

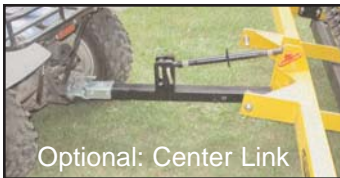


Introducing the new NORTEC Job Site Tractor/ATV/Utility Vehicle Toolbar. The toolbar converts to a complete line of job site attachments. Start out with the base unit toolbar. From there, the sky's the limit! You need a straw crimper? Just insert the attachment into the toolbar. You want a roller attachment? Just add on a roller. You want a dual roller for landscaping or lawn rolling? It's as easy as installing a second roller and removing the straw crimper - all with the same base unit! Need a thatcher? Install a 1- 2- or 3-thatcher assembly for a truly commercial duty lawn thatcher. Want to thatch and roll? Install the roller along with 2 thatcher assemblies! This unique and exclusive design provides low cost multi-purpose equipment purchasing. Save trailer space! Bring along the toolbar with all the job site attachments you need and you're ready for a full day's work. As easy as removing 4 bolts and installing the needed attachment. NORTEC's unique QUICK-FLIP hitch provides for both a tractor and an ATV/utility vehicle by pulling a pin and relocating the hitch for either a 3-point hitch or pull-style usage. Watch for our growing line of job site attachments for the NORTEC Toolbar.



Quick-Flip Hitch

Convert from tractor to ATV/utility vehicle simply by pulling a pin and relocating the hitch.



Optional: Center Link



Unique Multi Pre-Drilled Hole Spacing

Pre-drilled holes allow for adding, removing or changing the location of job site attachments. For example, if you want the crimper in the rear and the roller in the front, just switch the attachment around. If a job requires one setting and the next job requires a different setting, NORTEC engineered the flexibility and adjustability you need and want!



ATV/Utility Vehicle

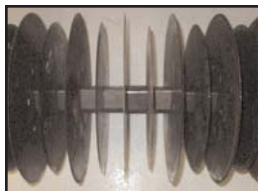


Job Site Roller Attachment

This commercial duty roller is designed for years of heavy duty usage. All steel construction (not plastic) with replaceable bearings and bearing housings. Note that the bearings are grease-able. Install either one or two rollers.



3-Point Tractor



Dual Crimp



Straw Crimper Job Site Attachment

Choose your spacing - 2 1/2", 3 1/2", 4 1/2" or NORTEC's exclusive Dual Crimp.

SwitchBack Attachments

Uniquely designed for the NT Toolbar. These Job Site Attachments may be switched back and forth as needed or as jobsite conditions dictate. Easy 4-bolt mounting system lets you convert between attachments in a matter of minutes. WOW! Need a different toolbar configuration? Just reposition the implement/attachment as needed. As seasons change, so does the NT Toolbar attachment. Lawn rolling, thatching, aerating in the spring - switching over for landscaping and straw crimping in the summer.

Check us out on the web www.nortecmfg.com



Add and leave your switchback attachment on the toolbar. The switchback attachment on the bottom side is in the working mode. Top side is in the storage/transport mode. Just quick-flip the toolbar over and now the top side is in the working mode and the bottom side is in the storage mode.

Example: Pictured above NT Toolbar is equipped with the straw chrimper, thatcher, roller, dimpler, and weight kit. Now you have a 4 in one tool. WOW



Install a trailer hitch ball coupler and turn your 3-point toolbar into a pull type



Center link rigid or float control standard equipment



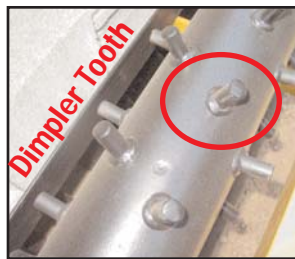
All Switchback Attachment may be moved and attached as needed. If the picture is not the normal method of turf care/landscaping you may reposition the switchback attachments to suit your needs.



Viber-Tine Thatcher
Rubber mounting vibrates as it cruises the turf line removing thatch and aerates the turf. Removing the thatch layer helps promote turf growth.



Low Cost Weight Kit
Add up to 9 concrete blocks.
Easy on, Easy off
Add weight as needed.



NORTEC EXCLUSIVE DIMPLER Tooth/Roller

Whether, you're landscaping or turf care the **DIMPLER** is the perfect choice. The Dimpler to your landscaping sets and dimples the soil (making for small seed pockets). Turf care application Dimpling the turf helps control water run off, also preventing fertilizer run off (Saving both irrigation and fertilizer bills).



W9112 Cherry Road, Antigo WI 54409
Phone 715.623.6300 Fax 715.623.6340

For More Information Call 715.623.6300 And Ask For Product Support Center

NORTEC reserves the right to change design or specifications without notice. Information contained herein is general in nature and is not intended for specific application purposes. Photographs contained herein may be displayed with safety and/or guards removed to show mechanical functions.